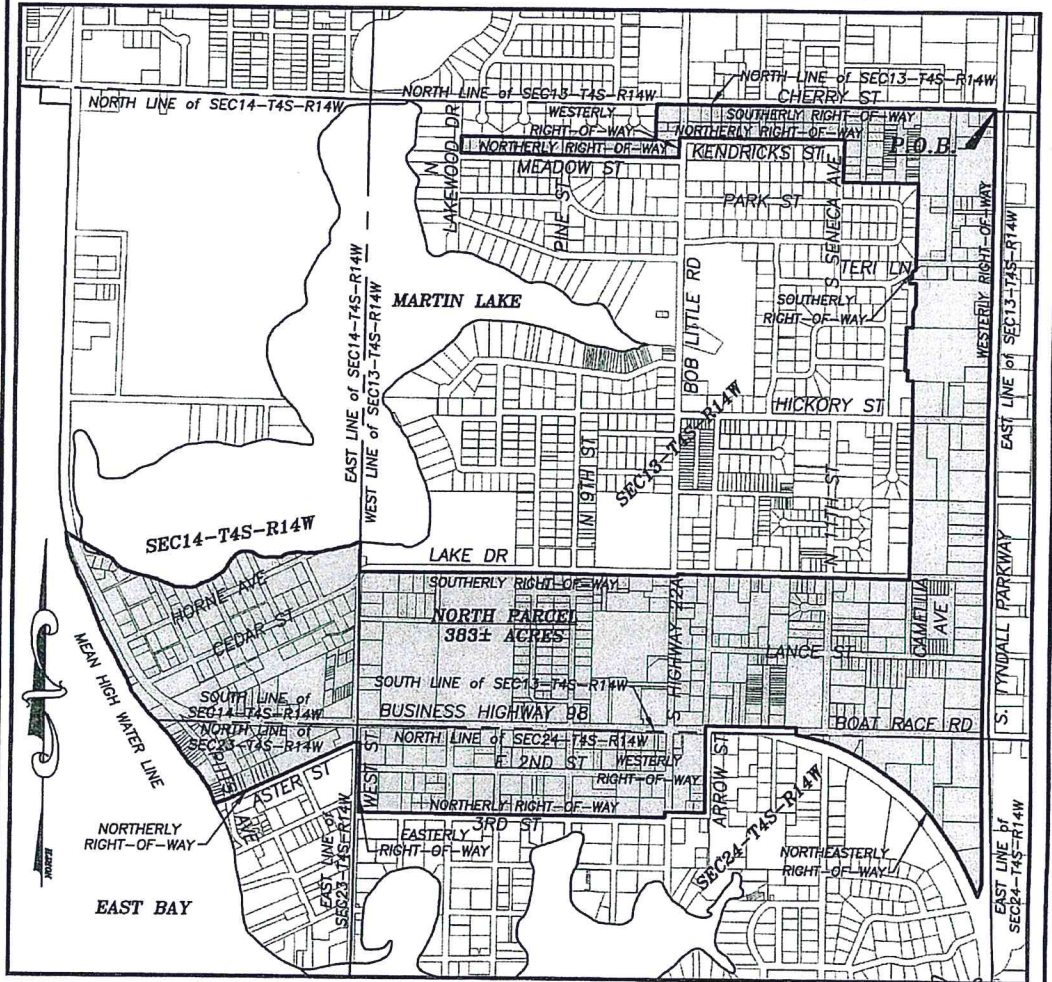


SKETCH AND LEGAL DESCRIPTION
PREPARED FOR
CITY of PARKER
COMMUNITY REDEVELOPMENT AGENCY
BAY COUNTY, FLORIDA



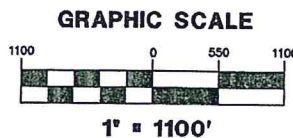
- LEGEND AND ABBREVIATIONS**
- AVE AVENUE
 - C.R.A. COMMUNITY REDEVELOPMENT AGENCY
 - DR DRIVE
 - E EAST
 - LN LANE
 - N NORTH
 - P.O.B. POINT OF BEGINNING
 - R RANGE
 - RD ROAD
 - S SOUTH
 - SEC SECTION
 - ST STREET
 - T TOWNSHIP
 - US UNITED STATES
 - W WEST
 - ± PLUS OR MINUS

MAP OF DESCRIPTION
THIS IS NOT A SURVEY

SHEET 2 OF 3

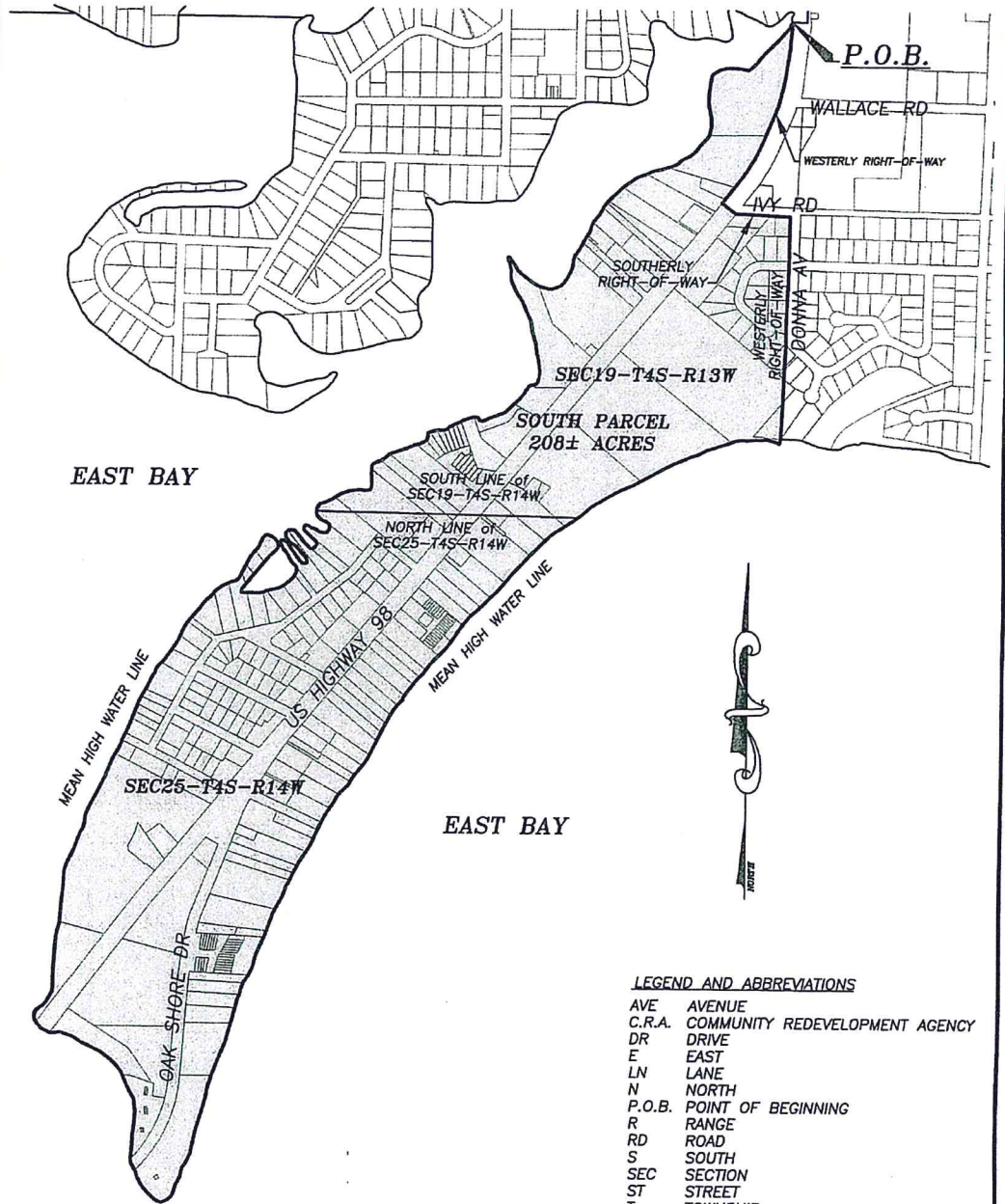
DESCRIPTION ON SHEET 1 OF 3

PREPARED FOR:
CITY OF PARKER, C.R.A.
DATE: 11/29/06 SCALE: 1"=1100'
PROJECT #: 06-0973.000
DESIGN: J.A.P. CHECKED: W.D.M.



DRMP
ENGINEERS • SURVEYORS • PLANNERS • SCIENTISTS
100 Beckrich Road ~ Suite #120
Panama City Beach, Florida 32407
Telephone: 850.236.4868 FAX: 850.236.1477
L.B. #2648 Web: <http://www.drmp.com>

SKETCH AND LEGAL DESCRIPTION
PREPARED FOR
CITY of PARKER
COMMUNITY REDEVELOPMENT AGENCY
BAY COUNTY, FLORIDA



LEGEND AND ABBREVIATIONS

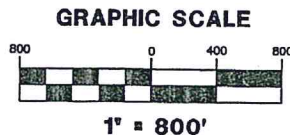
- AVE AVENUE
- C.R.A. COMMUNITY REDEVELOPMENT AGENCY
- DR DRIVE
- E EAST
- LN LANE
- N NORTH
- P.O.B. POINT OF BEGINNING
- R RANGE
- RD ROAD
- S SOUTH
- SEC SECTION
- ST STREET
- T TOWNSHIP
- US UNITED STATES
- W WEST
- ± PLUS OR MINUS

MAP OF DESCRIPTION
THIS IS NOT A SURVEY

SHEET 3 OF 3

DESCRIPTION ON SHEET 1 OF 3

PREPARED FOR:
CITY OF PARKER, C.R.A.
DATE: 11/29/06 SCALE: 1"=800'
PROJECT #: 06-0973.000
DESIGN: J.A.P. CHECKED: W.D.M.



DRMP
ENGINEERS - SURVEYORS - PLANNERS - SCIENTISTS
100 Beckrich Road ~ Suite #120
Panama City Beach, Florida 32407
Telephone: 850.236.4868 FAX: 850.236.1477
L.B. #2648 Web: <http://www.drmp.com>